

Spatial Data Infrastructure of Catalonia News

IDEC is distinguished as one of the 'best European practice' of 2009

Convened by the project eSDInet +, which is funded by the eContent Plus program of the European Union, it was held in Turin on 26th-27th November 2009, a meeting of the initiatives/projects/organizations which manage spatial data infrastructures or GIS/Web multi-stakeholder, at regional and local level. The organizers, with the help of an international jury, analyzed 135 initiatives, from which 12 were selected. The 12 best practices were presented at the meeting, among them IDEC.

One of the objectives of the eSDInet + project is to promote the exchange relations of experiences about spatial data infrastructures such as dissemination of good practices and successes of different European SDI.

The IDEC, representative, said that it would share this recognition with whole community (agencies, organizations, local administrations, universities, etc.) involved and participating in the construction of the Catalan SDI. It is the community who creates the network and gives coherence and meaning to the initiative.

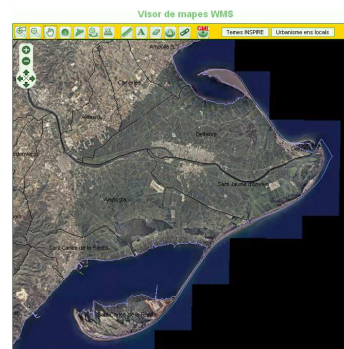
Click here for more information: <http://www.esdinetplus.eu/events/past.html>



Catalogue access



Map viewer access



Interesting links

[Geoportal IDEC Local](#)

[Geoportal IDEC Univers](#)

[Geoportal IDEC Univers \(general\)](#)

[OGC](#)

[INSPIRE](#)

[MetaD 3.0.5](#)

[ICC](#)

Barcelona SDI

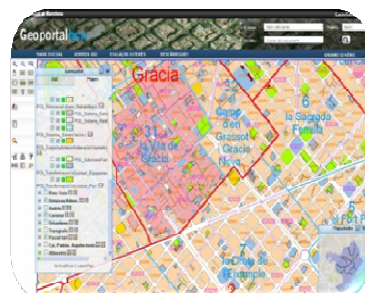
The Barcelona town council has created a Spatial Data Infrastructure which contains the 'Geoportalbcn' the SDI services: Catalog service, Geocoding service, visualization service of WMS services.

The link to Barcelona SDI geoportal:

<http://www.bcn.cat/geoportal/en/presentacio.html>

and the link to map viewer is:

<http://w24.bcn.cat/geoportal/index.html?lang=en>



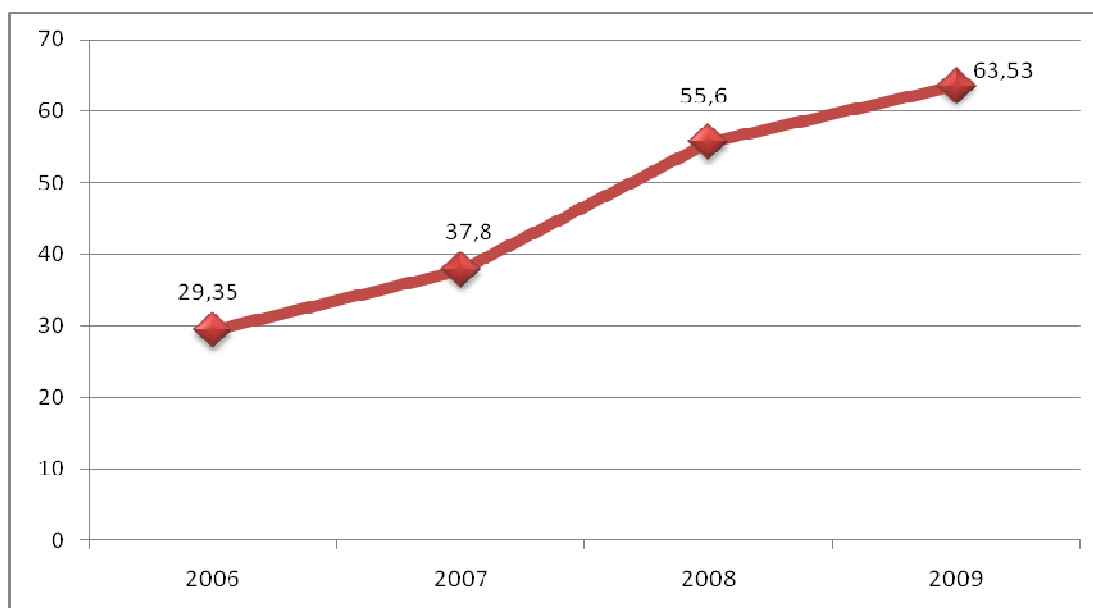
Evolution of IDEC indicators

The indicators of IDEC evolution are elaborated from the analysis of the most significant data, about activities and results of IDEC. The result is an abstract value which informs about the annual development level, and allows comparing the achieved objectives within a period.

The rate of 2009 is 63,53 %, which has increased by 8% compared to 2008.

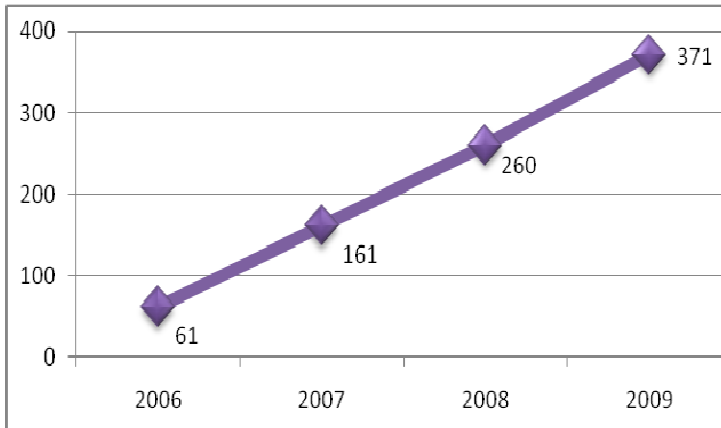
For more information on the development and the values of indicators:

<http://www.geoportal-idec.net/geoportal/eng/inici.jsp?pag=indicadors.html>



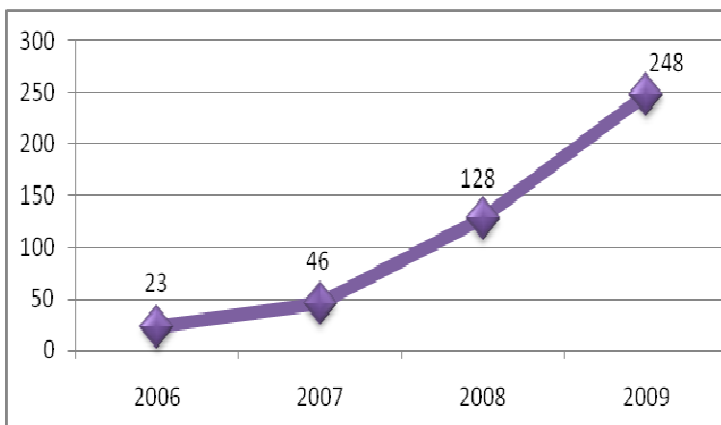
Evolution of IDEC Local participation

The IDEC LOCAL initiative keeps on being consolidating. The number of local authorities that participate in it evolves upward.



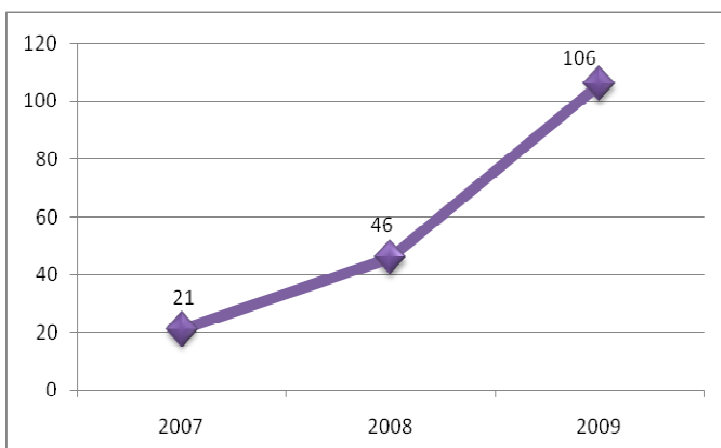
Evolution to number of local authorities used IDEC resources.

At the end of 2009, the number of WMS services configured by the local authorities is from 248, value that represents practically the double that in the year 2008 (128).



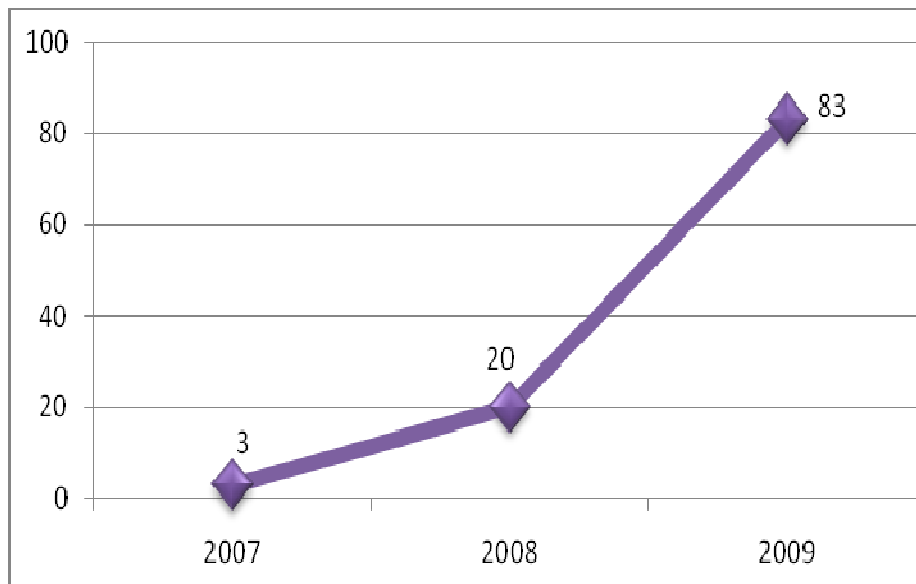
Evolution to number of WMS services configured by local authorities of Catalonia.

Of the set of configured WMS services by the local authorities, 106 contain urban plan information. In 2009 the number of WMS services with urban planning geoinformation has also experienced a pronounced growth: more that the year 2008.



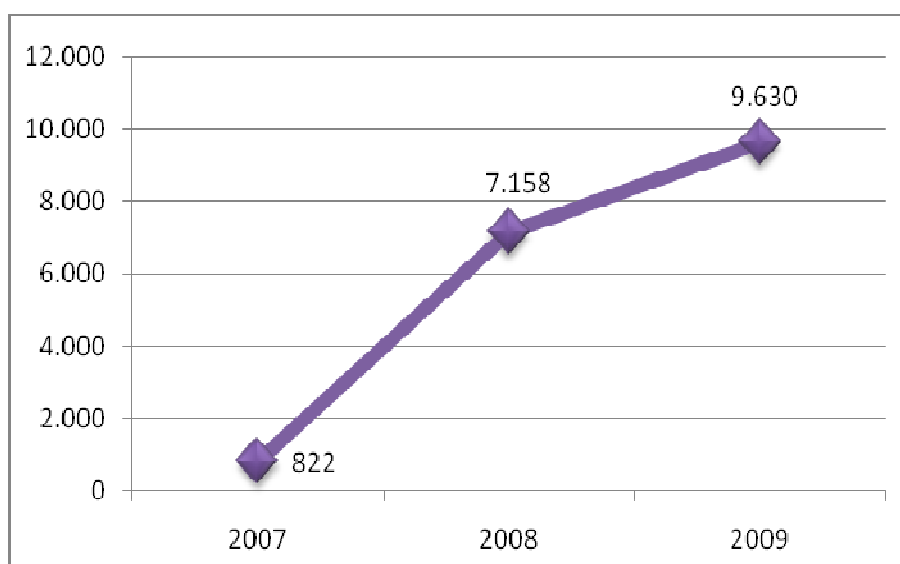
Evolution to number of services WMS of local authorities with urban plan information.

The number of metadata services is 83. Even though it does not correspond with the whole of the number of services configured (248) the value is very positive since the volume of existing registries has been trebled with respect to 2008. It is expected to be able to publish the rest of the metadata of services in a short time.



Evolution of the number of metadata on duty of the services WMS configured by the local authorities.

It is necessary to highlight the good participation of the local authorities in the elaboration and the updating of the respective metadata of data. The number of registries has increased in 2.472 in 2008; moreover, there has been a process of relevant maintenance that guarantees the validity and the updating of the data.



Evolution to number of data metadata of local authorities that are accessible in the IDEC catalogue.

From the Center of Support IDEC the participation of the local authorities in the initiative IDEC is very positive, and it thanks them for the efforts dedicated. Also it encourages them to continuing with these tasks. The CS IDEC will continue giving support to all local entities that request it.