

Prototip digital de mapa antic

V.Pascual
R.Roset



ICGC
Institut
Cartogràfic i Geològic
de Catalunya



**Generalitat
de Catalunya**

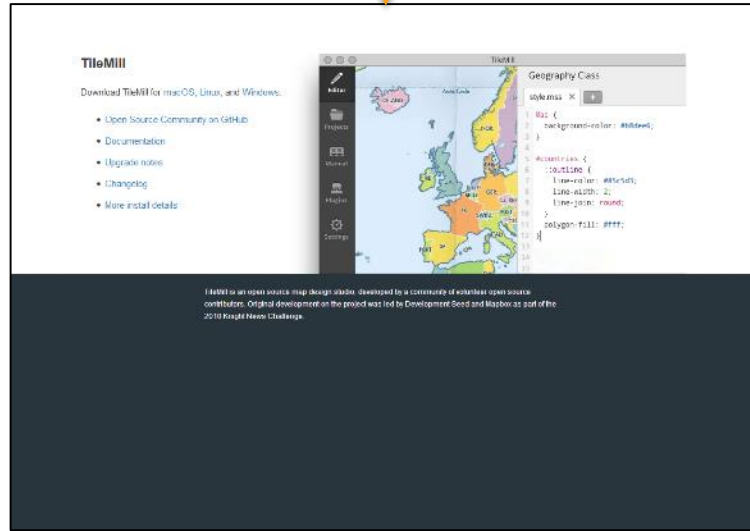
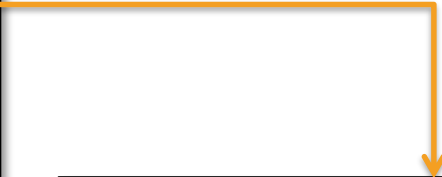
De fulls a mbtiles



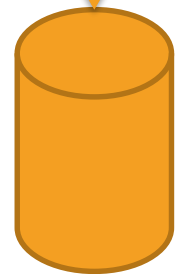
54 fulls i 26 GB

Foto: C.Montaner

Tilemill de Mapbox
(GDAL)



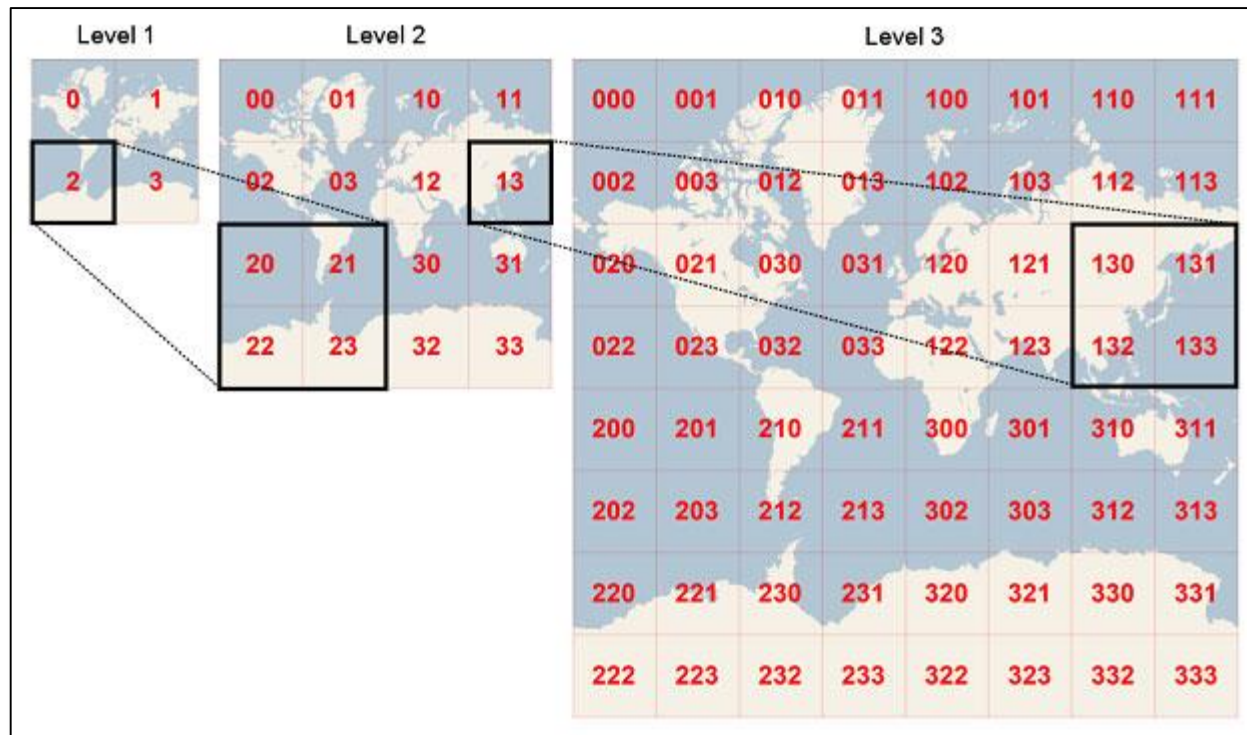
1 PBF de 16 GB



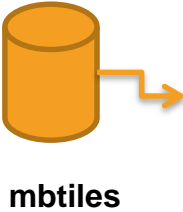


Quadtree

Organització interna d'un MBTILES: tessel·les petites en PNG



Mbtiles en 2D o en 3D



TileServer Maps served from your webserver.

This project is developed in PHP, not because it is the best language for development of web applications, but because it maximally simplify the deployment on large number of web hosting providers including various free web hostings.

Tiles are served directly by Apache with mod_rewrite rules as static files and therefore are very fast and with correct HTTP caching headers. Only XML metadata are delivered via PHP. MBTiles are served via PHP, and are therefore slower, unless they are unpacked with mbutil.

MapTiler can render GeoTIFF, ECW, MrSID, GeoPDF into compatible map files (JPEG, PNG, GIF and TIFF) with scanned maps or

TileServer de Klokantech

Leaflet per al 2D

Leaflet
an open source JavaScript library for mobile-friendly interactive maps

Overview Tutorials Docs Download Plugins Blog

Aug 8, 2017 — Leaflet 1.2.0 has been released.

Leaflet is the leading open-source JavaScript library for mobile-friendly interactive maps. Weighing just about 38 KB of JS, it has all the mapping features most developers ever need.

Leaflet is designed with simplicity, performance and usability in mind. It works efficiently across all major desktop and mobile platforms, can be extended with lots of plugins, has a beautiful, easy to use and well-documented API and a simple, readable source code that is a joy to contribute to.

Cesium per al 3D

We've expanded! Find all the work coming out of the Cesium lab at cesium.com

About Demos Downloads Developers Forum

CESIUM
An open-source JavaScript library for world-class 3D globes and maps

Tap to Interact

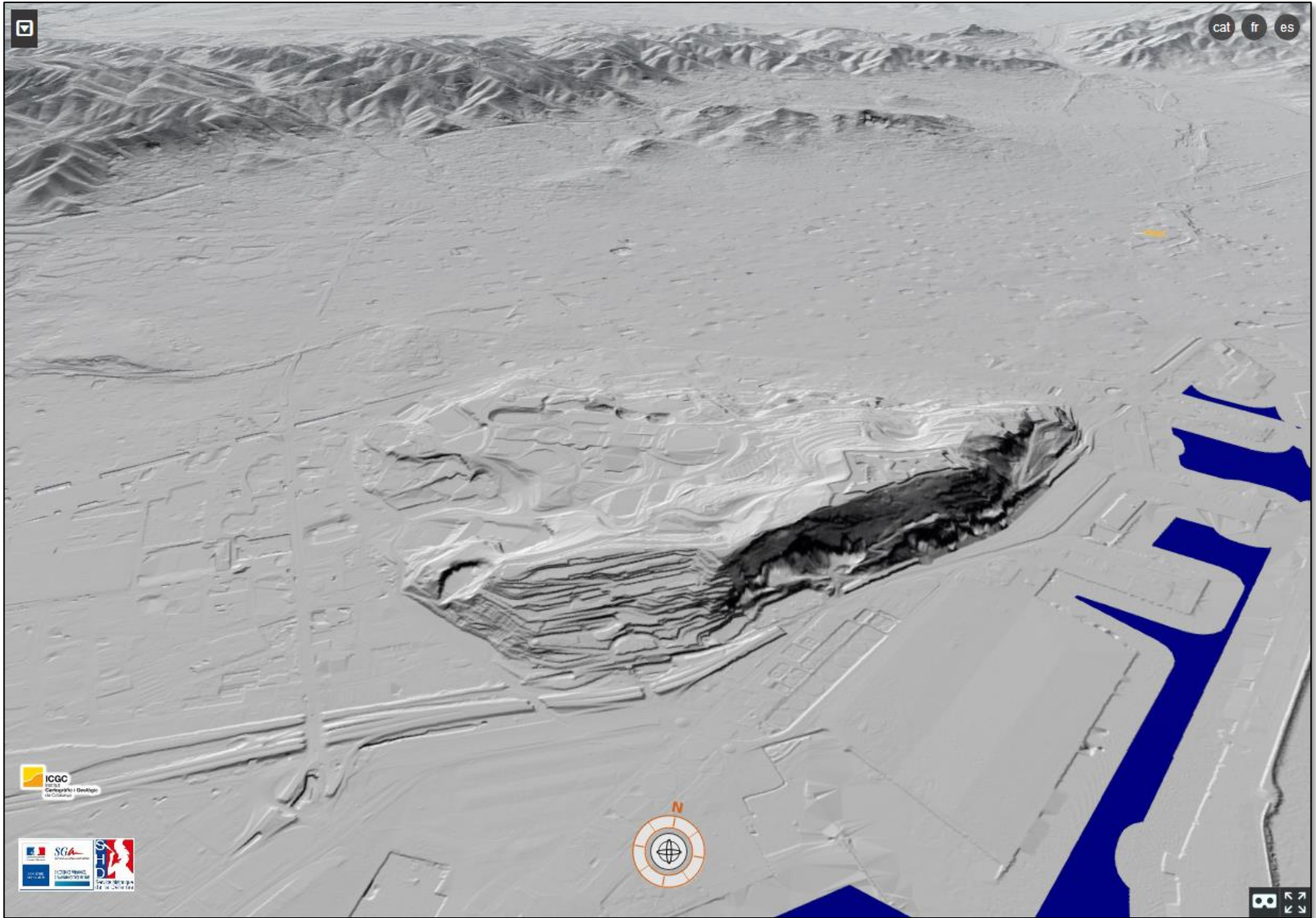
to Nov 27 2017 12:28:04 (UTC) CESIUM AG Bing Custom Oligarcos SCS - © 2017 Microsoft Corporation

Prototip 2D Leaflet amb la ortofoto 1956 de fons i el mapa Cerdà de 1853 de referència

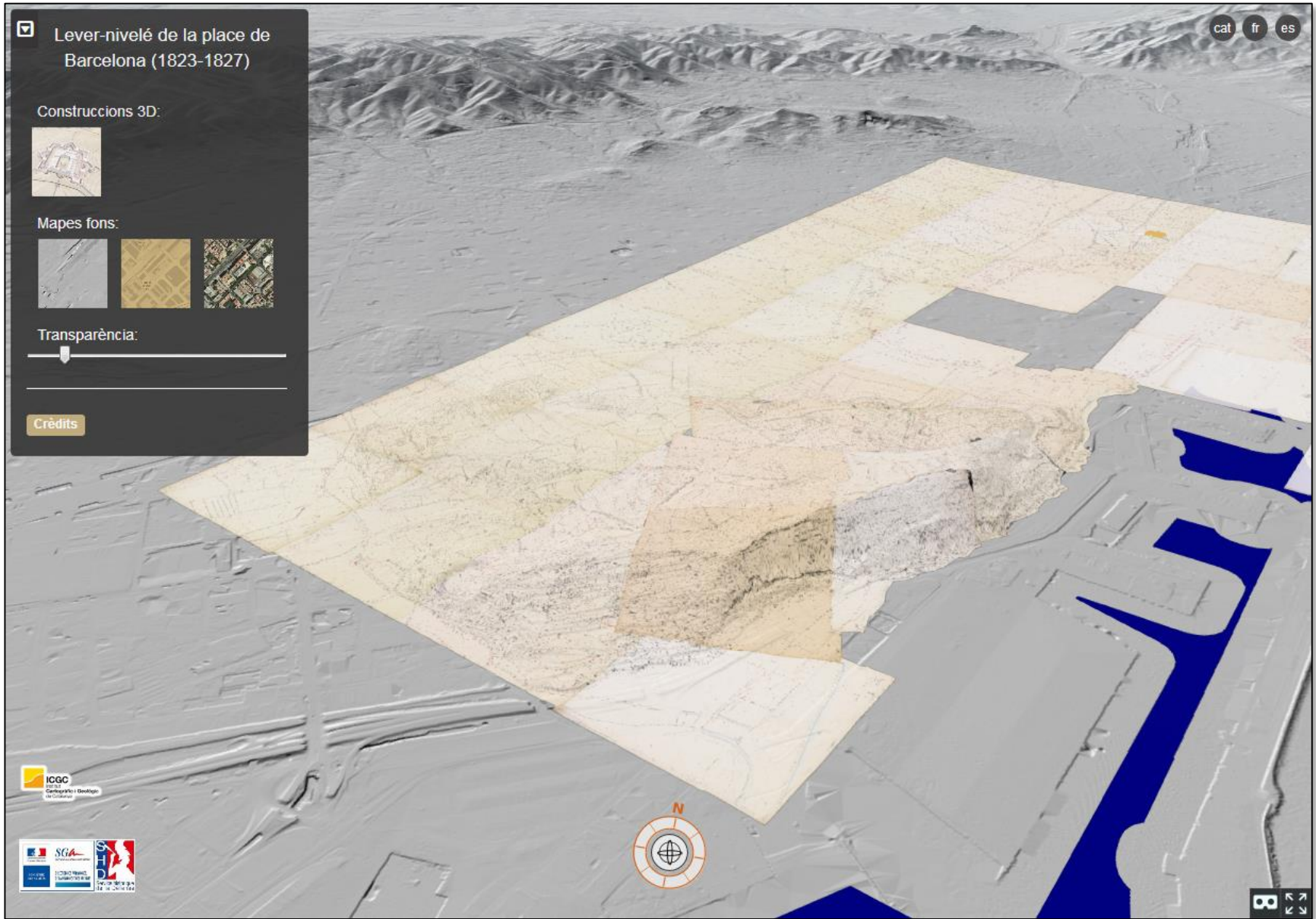


ZL-13 | Mapa © Institut Cartogràfic i Geològic de Catalunya

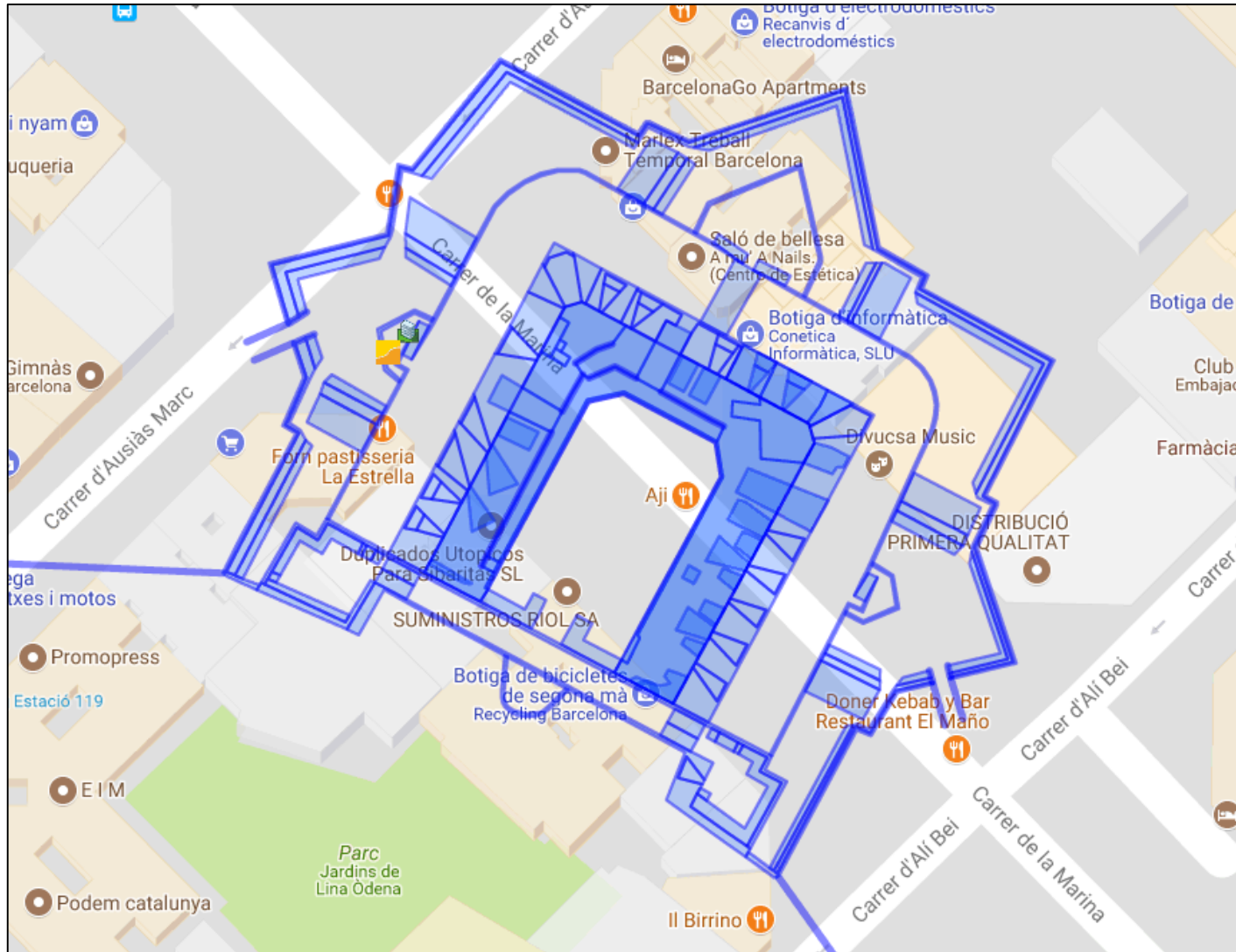
Model Digital d'Elevacions (DEM) 2x2 per visualitzar el relleu



Aspecte final del prototip complet



Model 3D de l'edifici, ara destruït, del Fort Pienc tal i com apareix al Lever Nivelé



Servei de tessel·les

Adreça del prototip:

<http://betaserver.icgc.cat/bcn1827/>

Serveis de les tessel·les, per web o GIS (amb reprojecció):

WMS

<http://tilemaps.icgc.cat/mapfactory/service?> (cal escollir la capa bcn1827)

WMTS

<http://tilemaps.icgc.cat/mapfactory/wmts/bcn1827/CAT3857/{z}/{x}/{y}.png>

TMS

<http://tilemaps.icgc.cat/mapfactory/tms/1.0.0/bcn1827/EPSSG3857/{z}/{x}/{y}.png>

Prototip digital de mapa antic

Institut Cartogràfic i Geològic de Catalunya

Parc de Montjuïc,
E-08038 Barcelona

41°22'12" N, 2°09'20" E (ETRS89)

 www.icgc.cat

 icgc@icgc.cat

 twitter.com/ICGCat

 facebook.com/ICGCat

Tel. (+34) 93 567 15 00

Fax (+34) 93 567 15 67

