

Taller en Design Thinking:

Geoinformació i clima

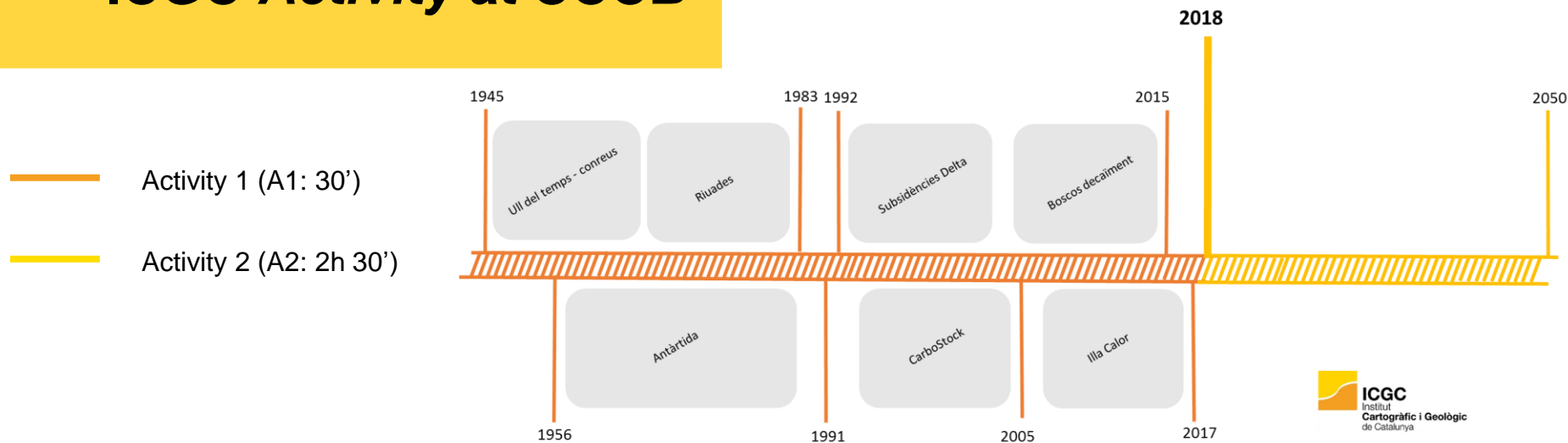


ICGC
Institut
Cartogràfic i Geològic
de Catalunya



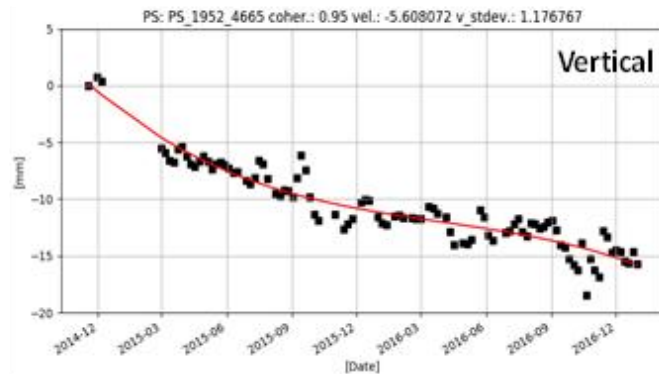
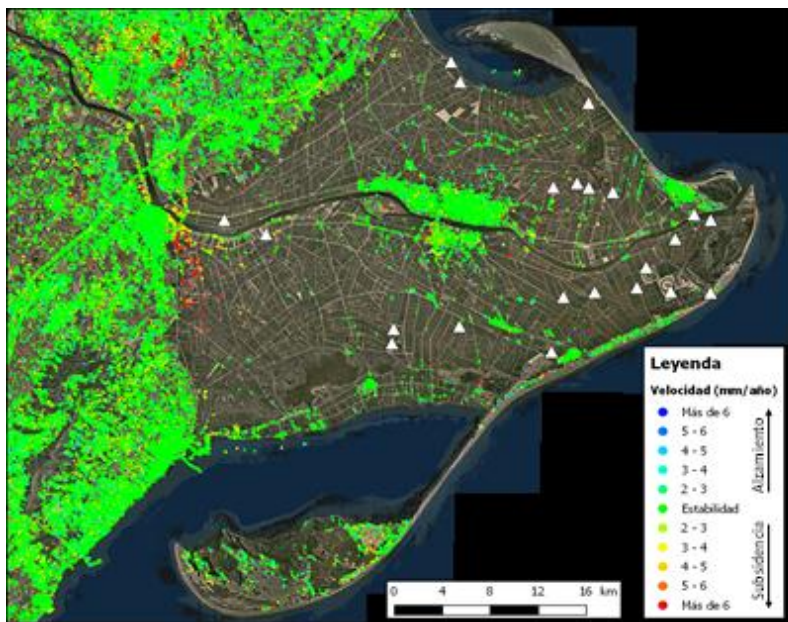
**Generalitat
de Catalunya**

ICGC Activity at CCCB



DELTA SUBSIDÈNCIES

A1



IRTA
RECERCA | TECNOLOGIA
AGROALIMENTÀRIES

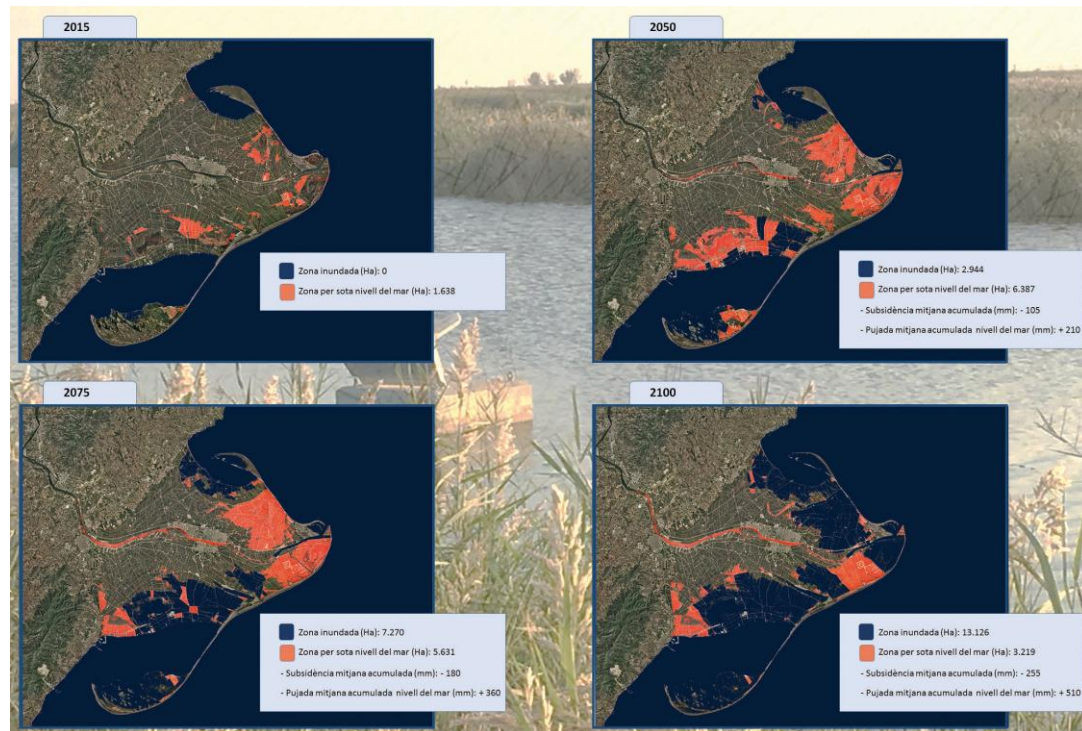
ICGC
Institut
Cartogràfic i Geològic
de Catalunya

DELTA SUBSIDÈNCIES

A1

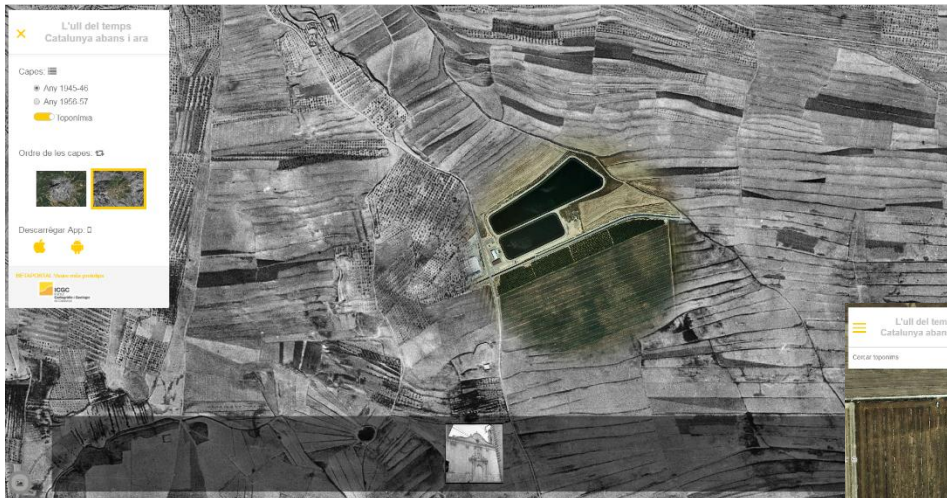
IRTA
RECERCA | TECNOLOGIA
AGROALIMENTÀRIES

ICGC
Institut
Cartogràfic i Geològic
de Catalunya



ULL DELS TEMPS CONREUS (1/2)

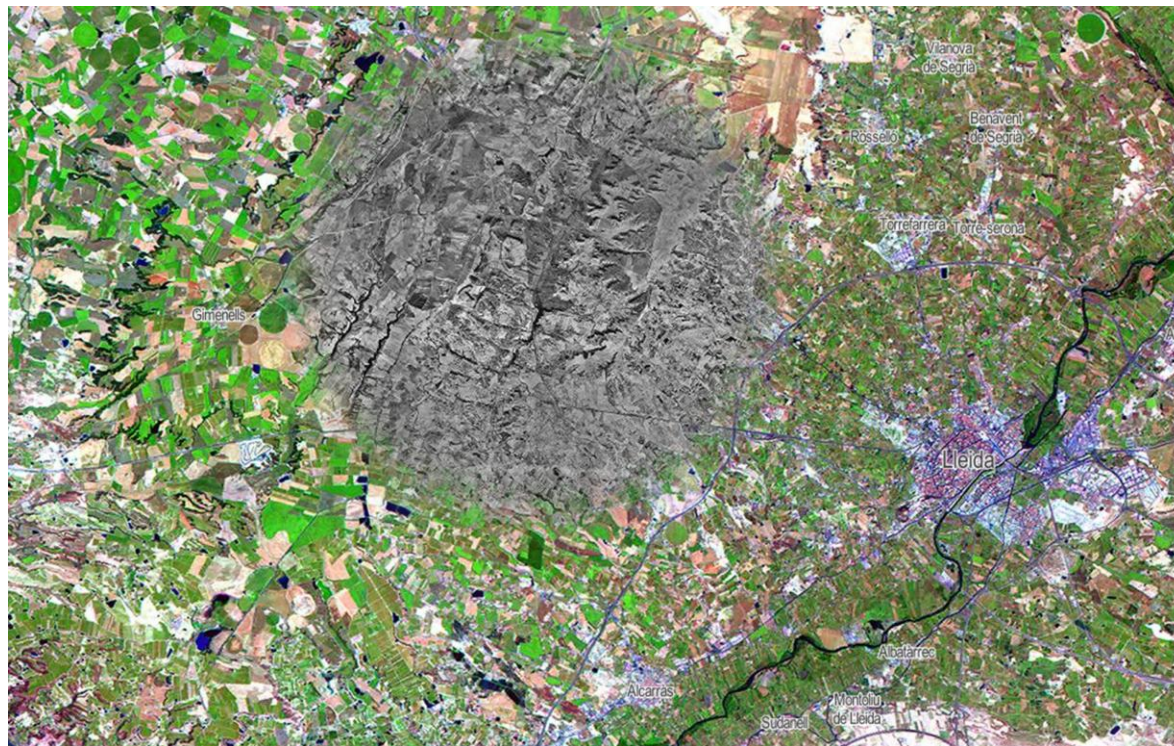
A1



ULL DELS TEMPS CONREUS (2/2)

A1

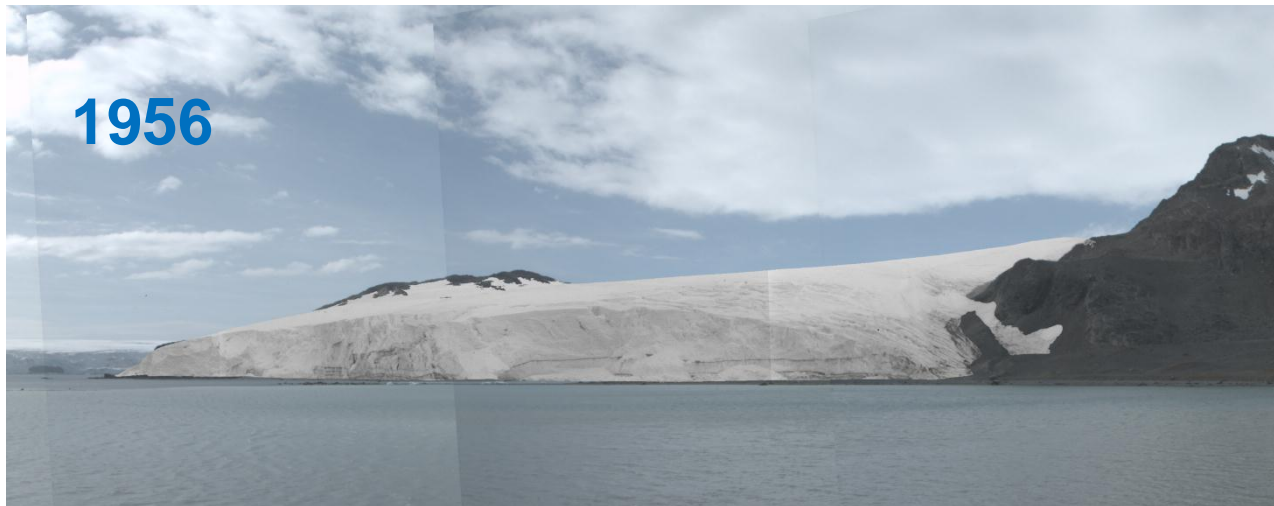
<http://betaserver.icgc.cat/ulldeltemps/#15/41.4121/2.2201>



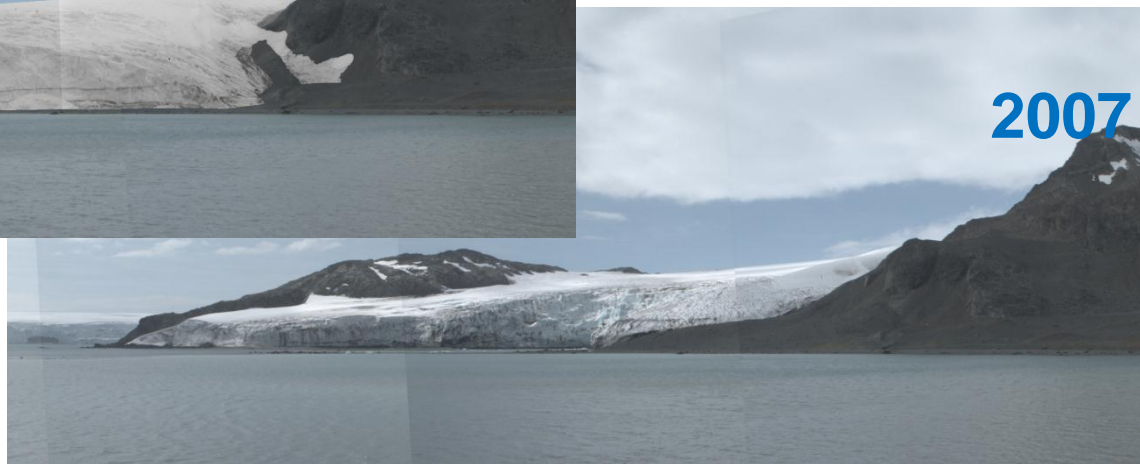
A1

ANTARTIDA (1/2)

1956



2007

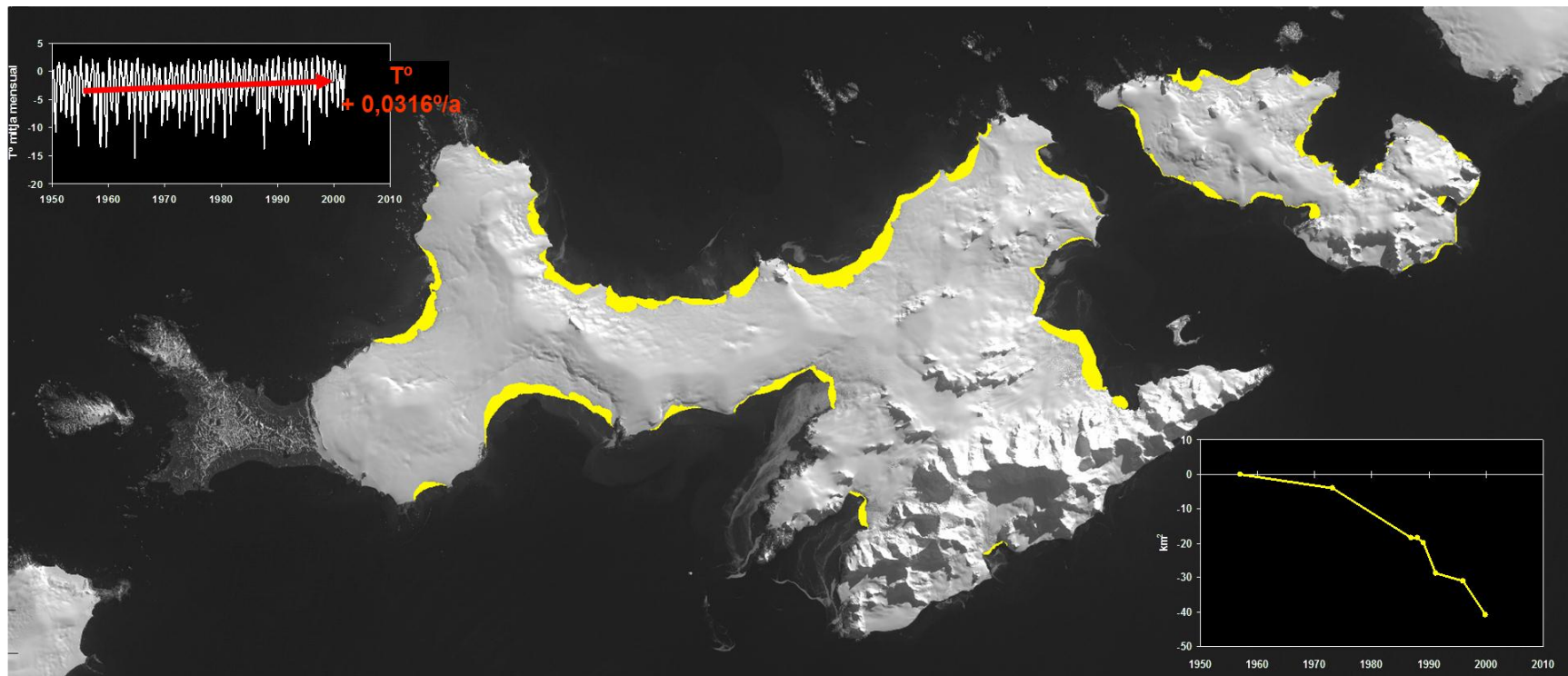


ANTARTICA (2/2)

A1

UNIVERSITAT DE
BARCELONA

ICGC
Institut
Cartogràfic i Geològic
de Catalunya

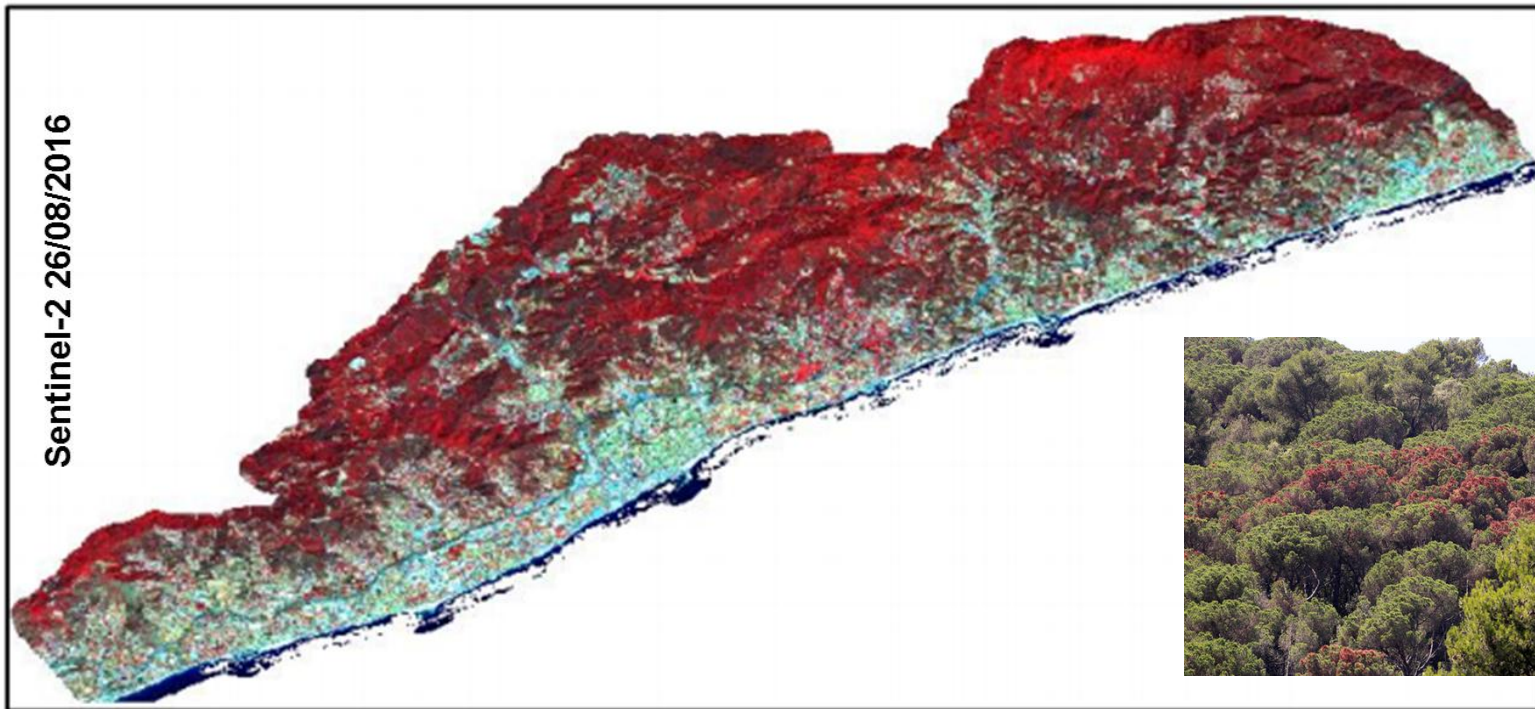


DECAÏMENT BOSCOS^{A1} (1/2)



Sentinel-2 02/08/2015

Sentinel-2 26/08/2016

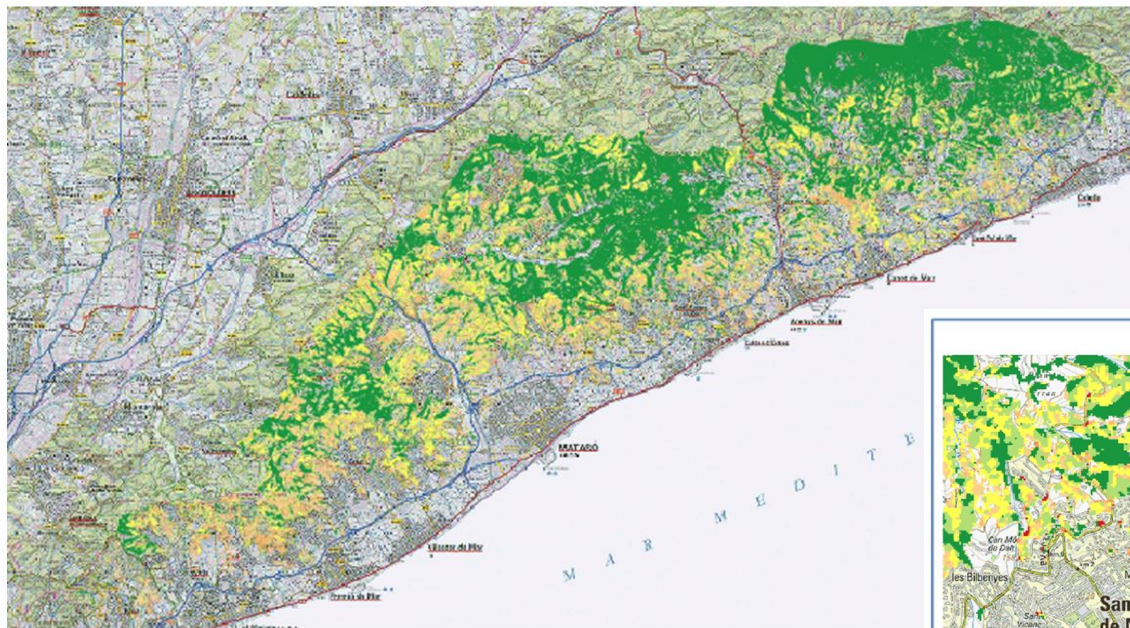


DECAÏMENT BOSCOS^{A1}

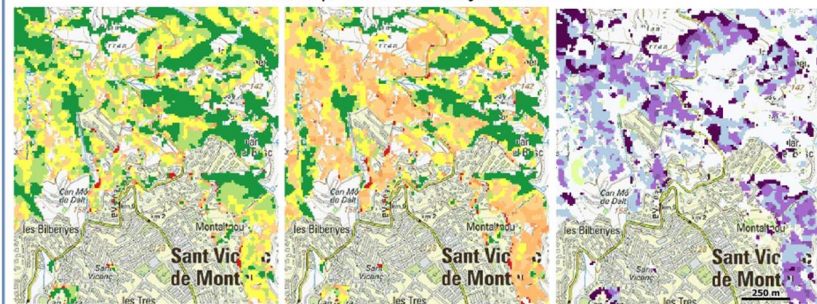
(2/2)



Mapa de decaïment 2015-2016



Municipi de Sant Vicenç de Montalt

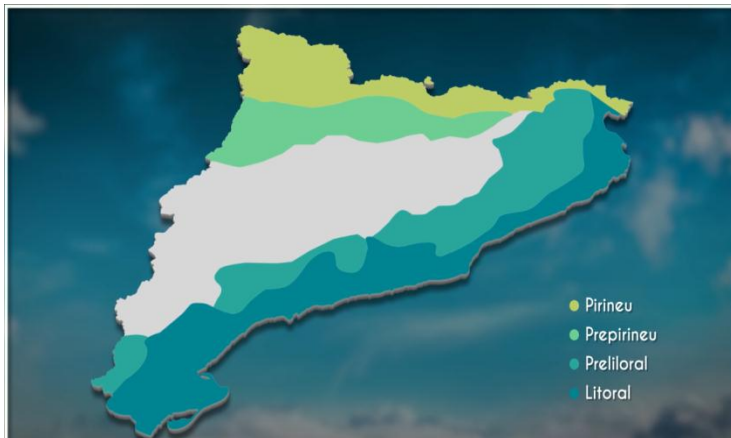


EVI 2015

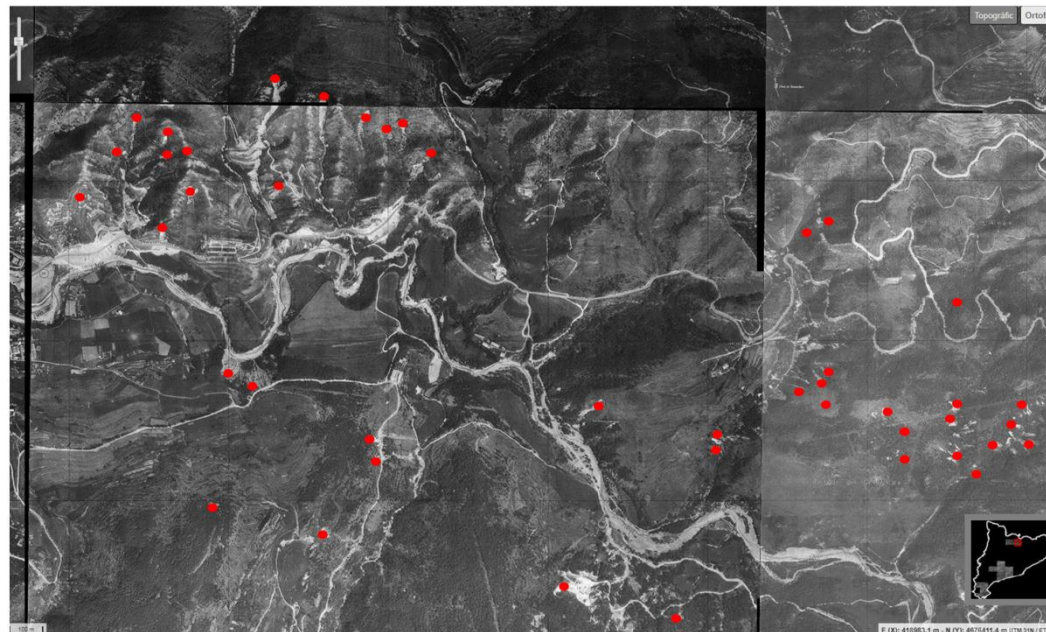
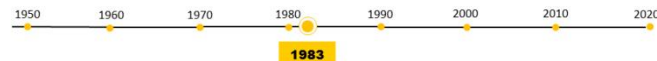
EVI 2016

Mapa de canvi

RIUADES (1/2)



- **Octubre de 1907**, conques de l'Ebre i del Segre.
- **Octubre de 1937**, vessant sud dels Pirineus.
- **Octubre de 1940**, conques del Ter i del Fluvià.
- **Setembre de 1962**, comarques del Vallès, Baix Llobregat i Maresme.
- **Setembre de 1971**, part baixa del riu Llobregat.
- **Novembre de 1982**, comarques pirinenques.
- **Octubre de 1994**, Serralades Costeres Catalanes.
- **Juny de 2000**, Montserrat i els seus voltants.
- **Juny de 2013**, Vall d'Aran.
- **Novembre de 2015**, riu Sió al seu pas pel municipi d'Agramunt.



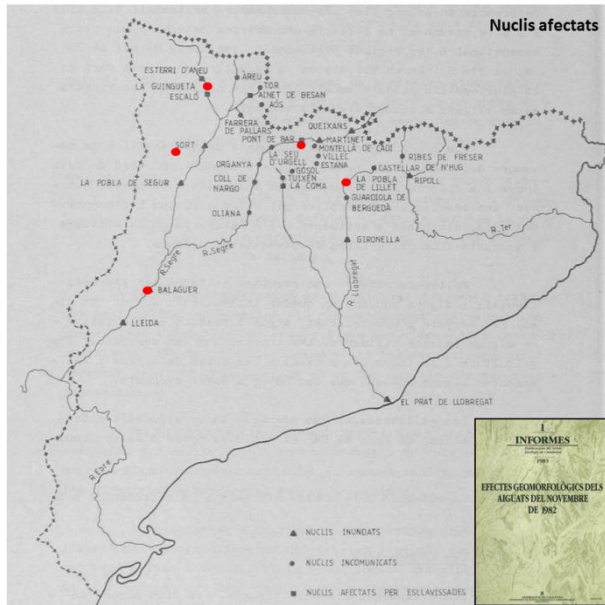
RIUADES (2/2)

A1

1950 1960 1970 1980 1990 2000 2010 2020

1982

Aiguats de novembre de 82



Esslavisada de la Coma



La Pobla de l'Illet



La Moleta



El Llobregat al pont de Guardiola



Pont de Collet



Balaguer



Capdella



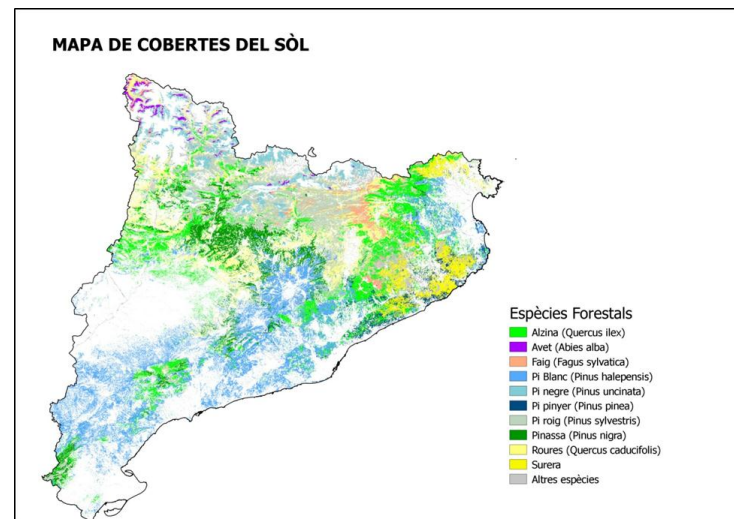
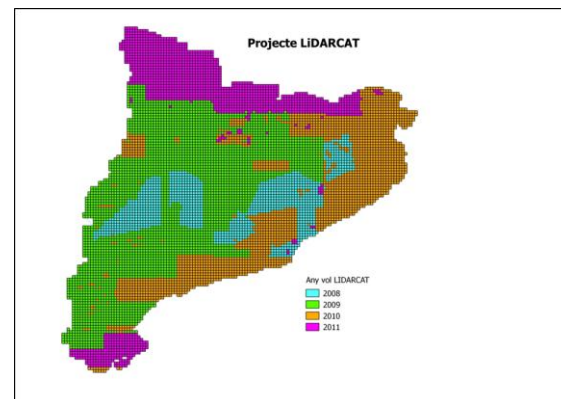
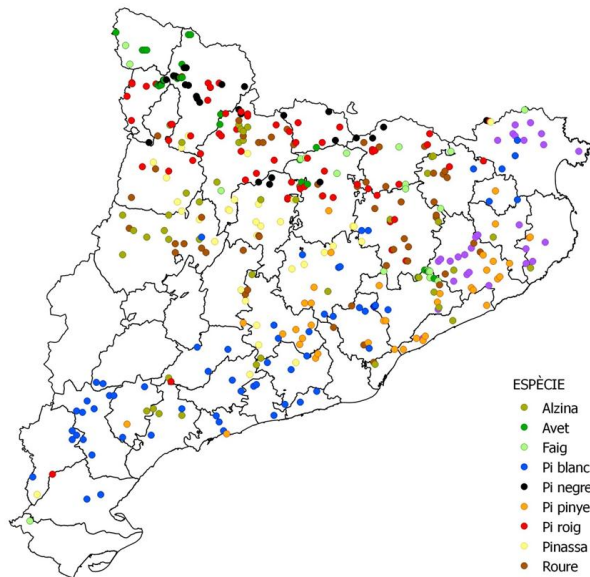
Barranc de Jou (La Guingueta)



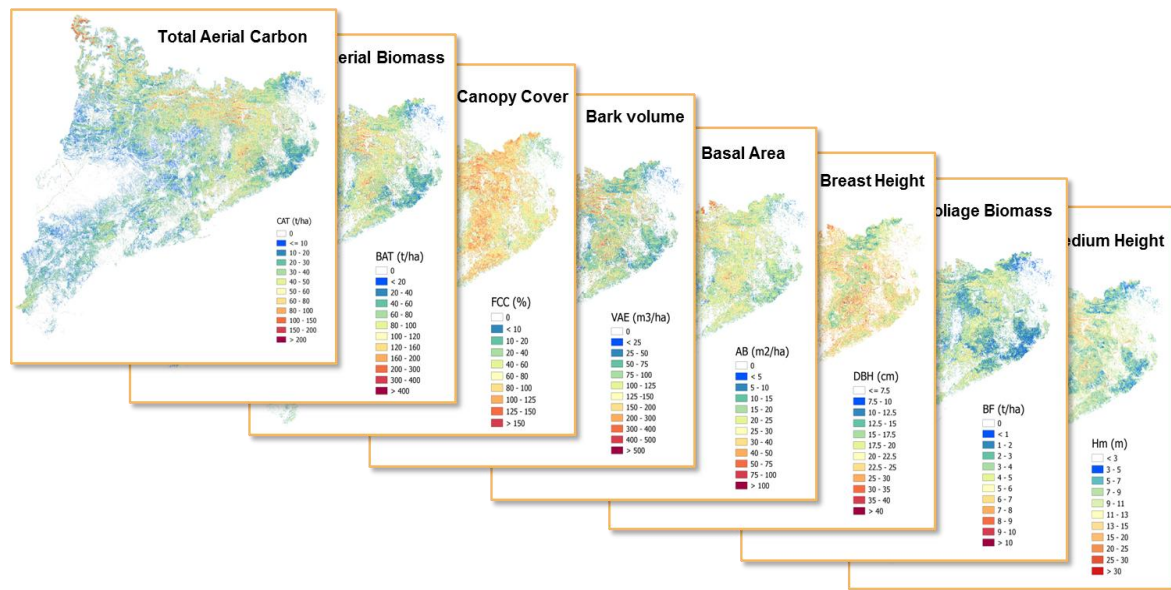
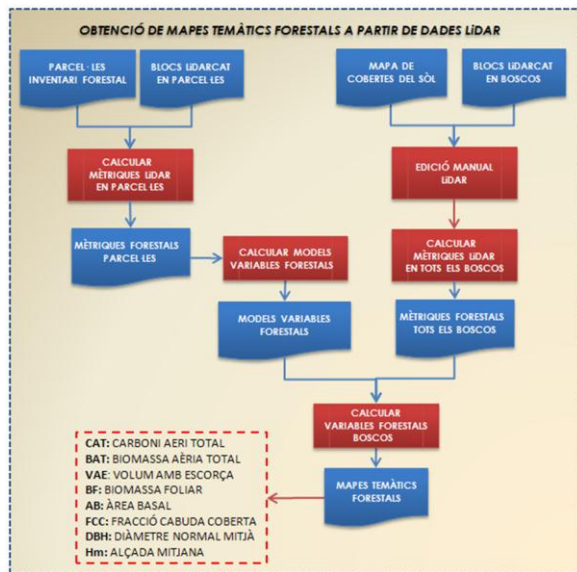
Pont de Bar

CARBO_STOCK (1/2)

A1

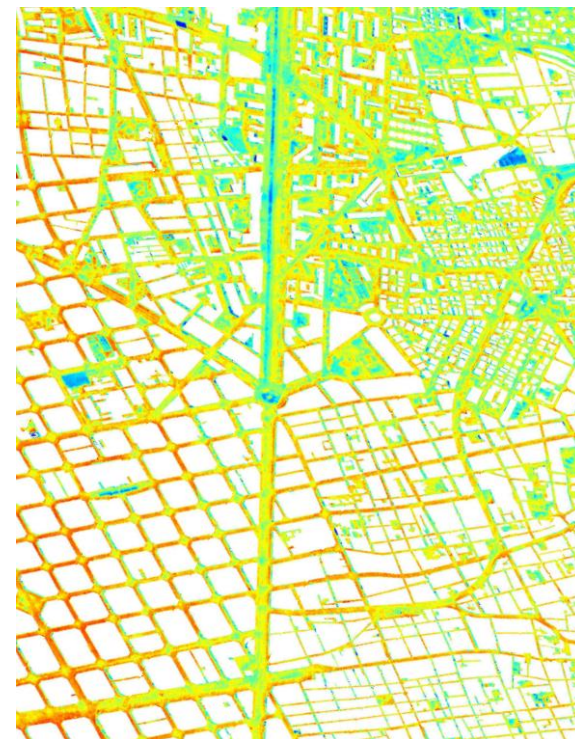
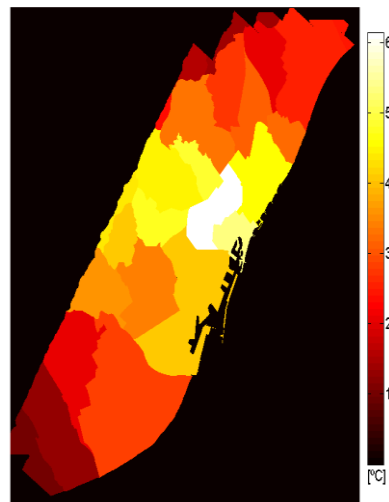
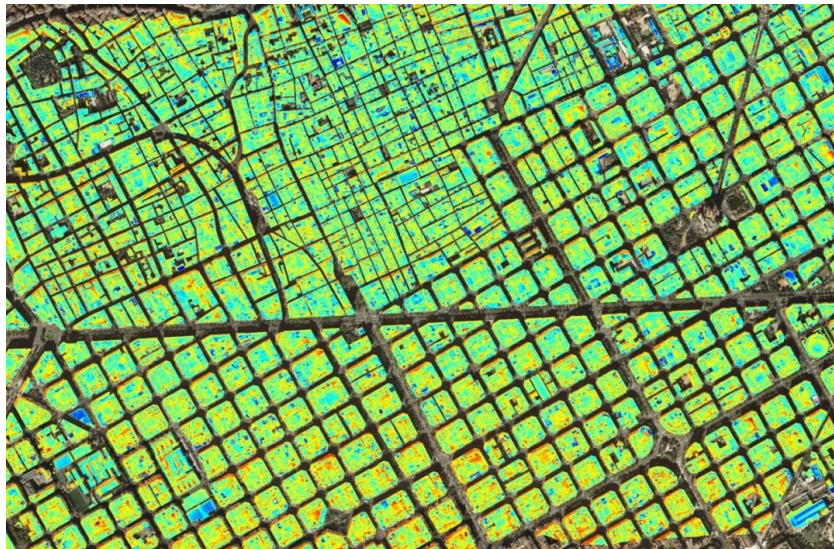


CARBO_STOCK (2/2)



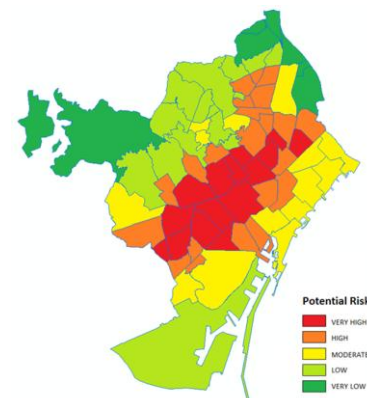
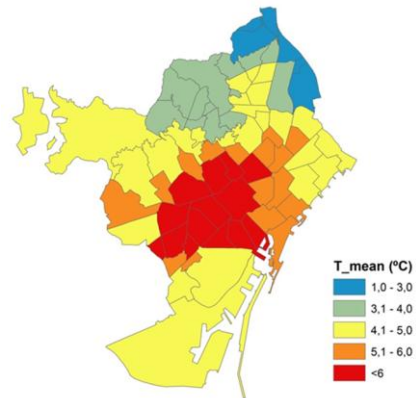
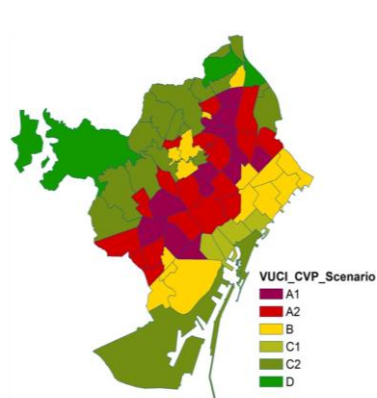
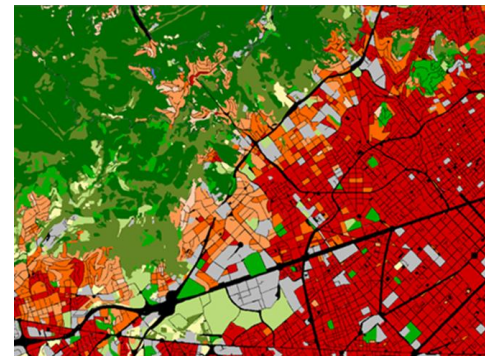
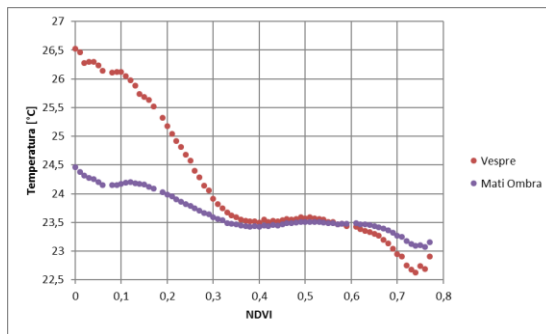
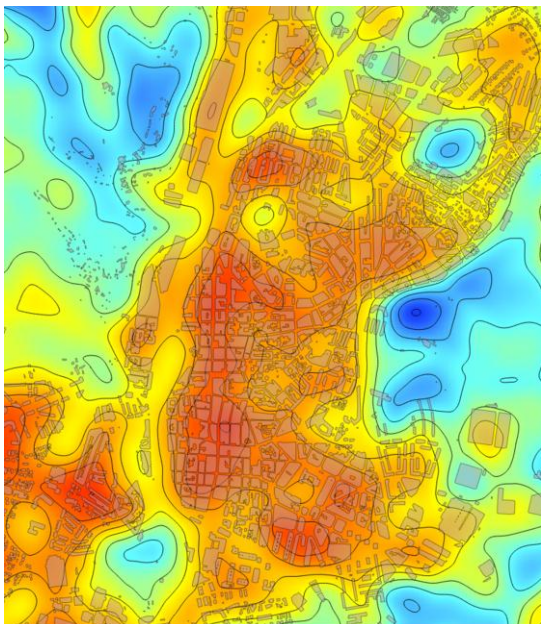
A1

ILLA DE CALOR (1/2)



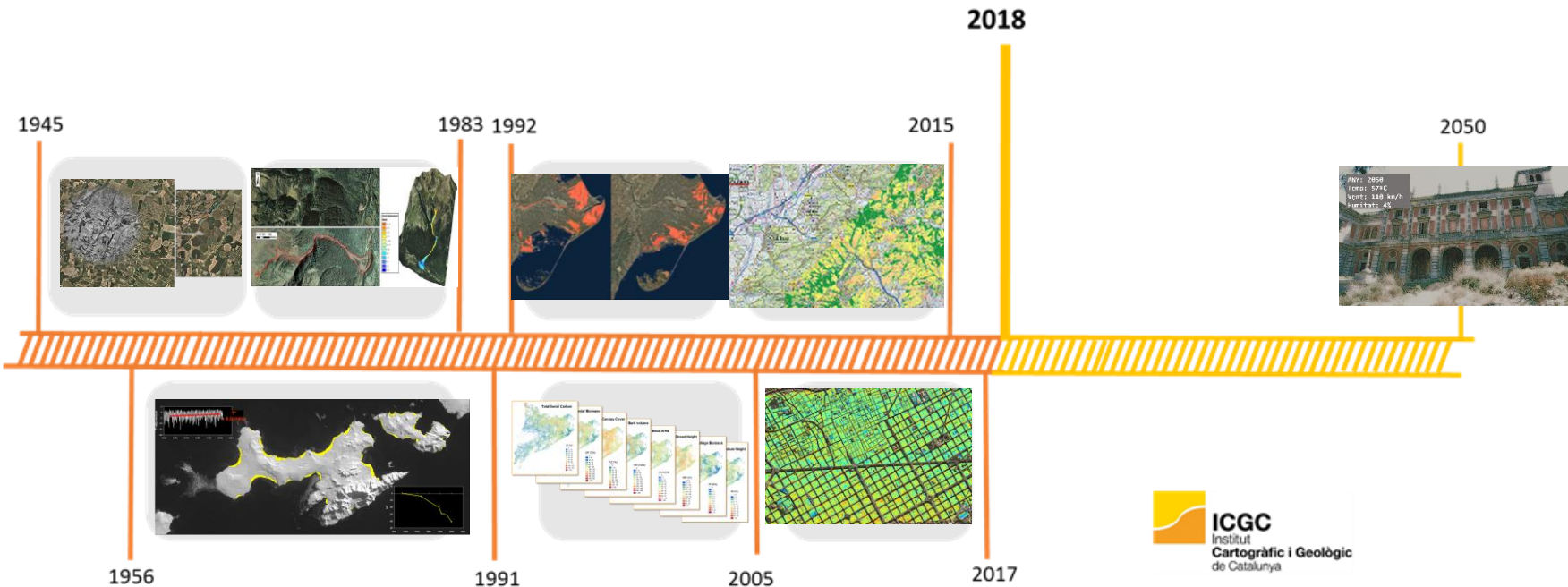
ILLA DE CALOR (2/2)

A1



LÍNIA DE TEMPS

A1



A1

LÍNIA DE TEMPS

ANY: 2050
Temp: 57°C
Vent: 110 km/h
Humitat: 4%

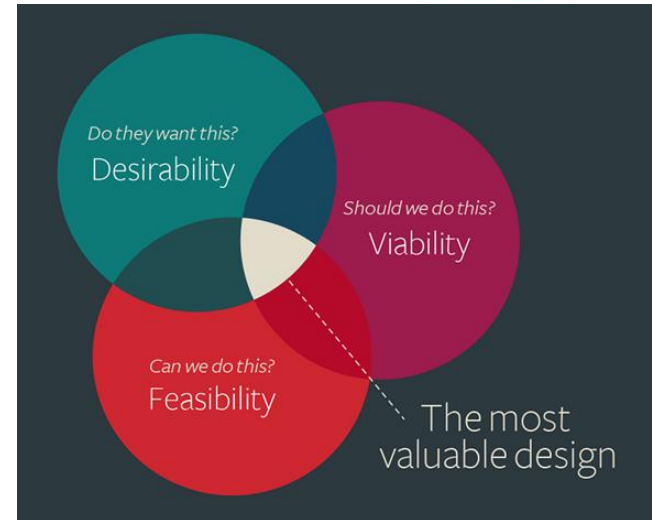
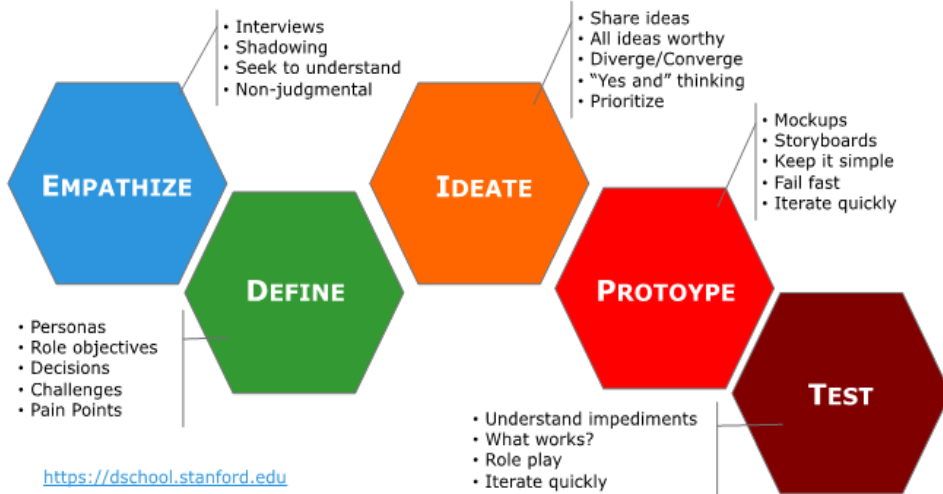


Design thinking



Design thinking can be described as a discipline or set of creative strategies to match people's needs with what is technologically feasible and what a viable business strategy can convert into customer value and market opportunity.

Stanford d.school Design Thinking Process



Design thinking

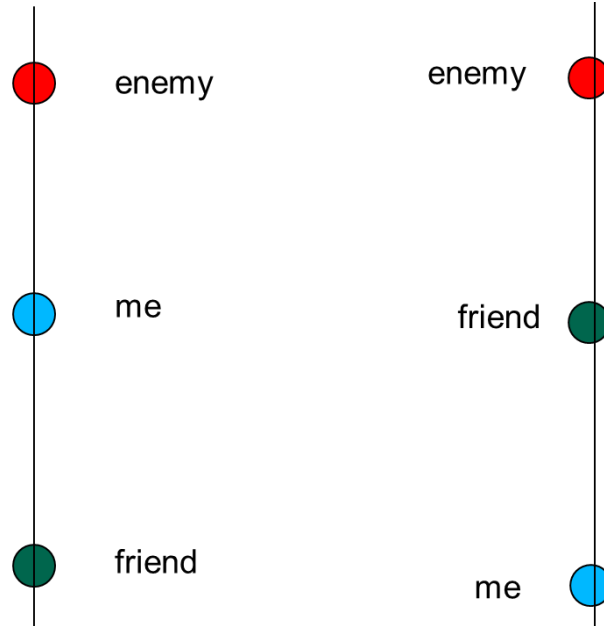
2h 30'

- STEP 1: WARM UP ACTIVITY (10')
- STEP 2: CREACIÓ DELS GRUPS (10')
- STEP 3: DETECCIÓ INSIGHTS (15')
- STEP 4: FORMULACIÓ CHALLENGES (15')
- STEP 5: IDEACIÓ-SKETH PROTOTYPING (30')
- STEP 6: POSTA EN COMU-DISCUSSIÓ (20')
- STEP 7: BENEFITS MAP I VALORACIÓ (10')
- STEP 8: WARM UP ACTIVITY (5')
- CLOENDA



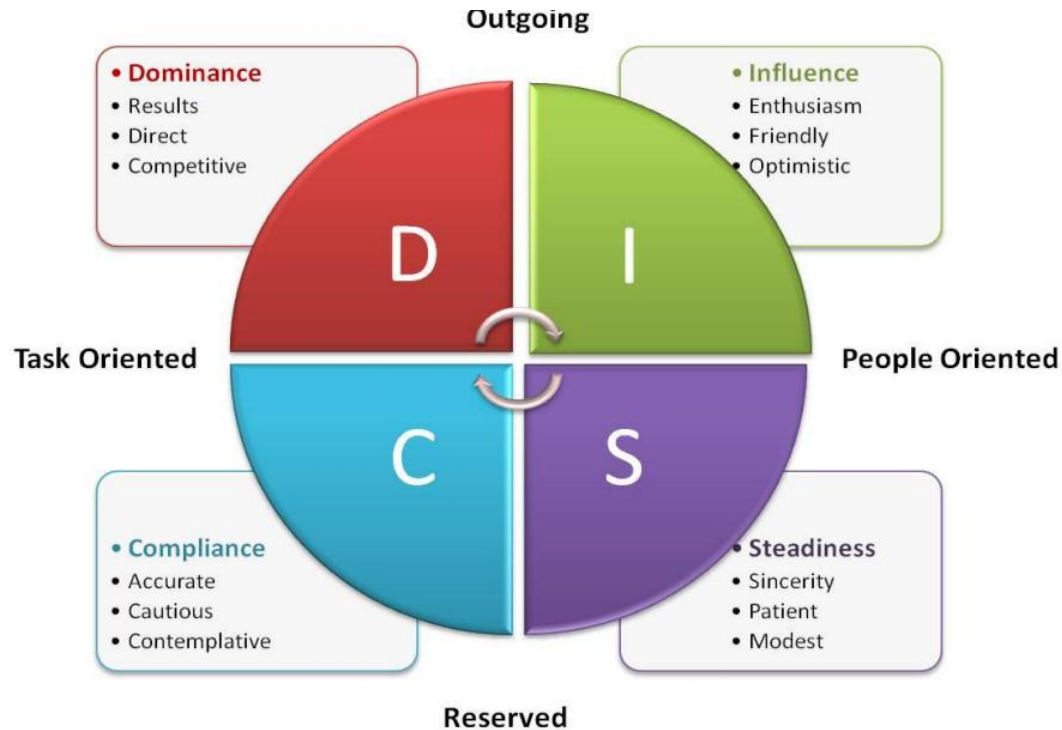
Design thinking

STEP 1



Design thinking

STEP 2



Design thinking

STEP 3-7



Design thinking

STEP 3-7

• **HOW MIGHT WE ... : COM PODRIEM NOSALTRES:**

- Estimular
- Avaluar
- Impulsar
- Educar
- Millorar
- Gestionar
- Corregir
-

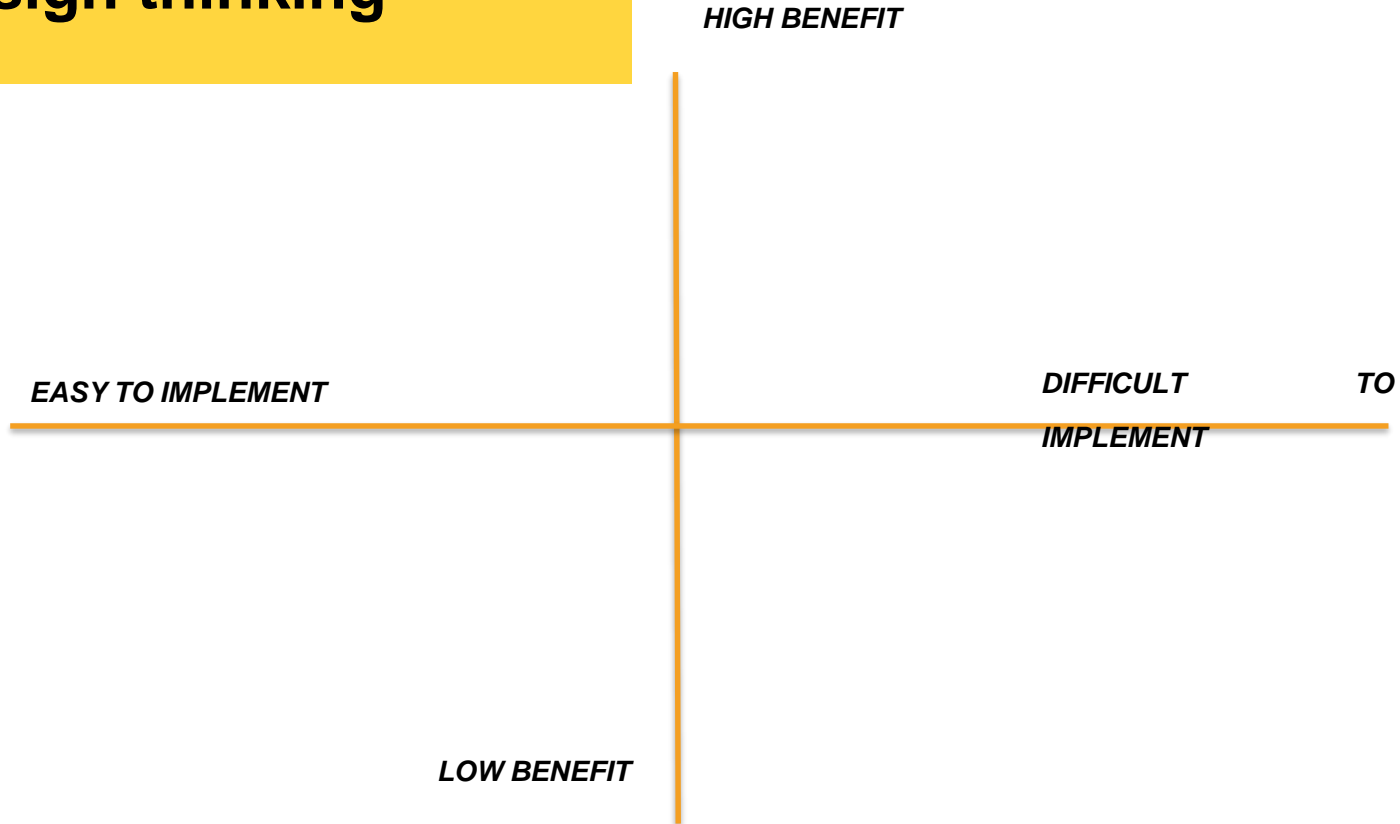


- STEP 3: DETECCIÓ INSIGHTS
- STEP 4: FORMULACIÓ CHALLENGES
- STEP 5: CONVERGENCE PHASE –CLUSTERS
- STEP 6: IDEACIÓ-SKETH PROTOTYPING
- STEP 7: POSTA EN COMU-DISCUSSIÓ

A2

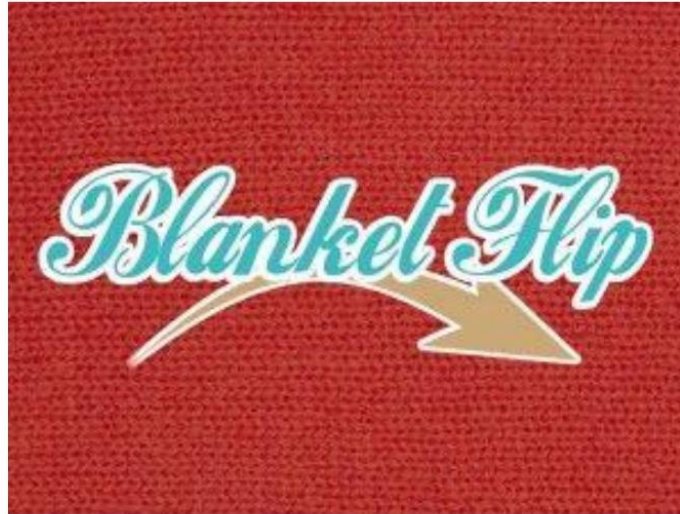
Design thinking

STEP 8: BENEFITS MAP



Design thinking

STEP 9: FINAL WARM UP AND DISCUSSION



When everyone is situated, explain to them that they must work as a team to turn the towel completely over (so that it is face up) without having anyone on their team touch the ground with any part of their body.

Design thinking: Geoinformació i Clima

MOLTES GRÀCIES A TOTS !!!

